

Draft Disability Access and Inclusion Plan 2026–2030

City of Prospect

Easy Read version

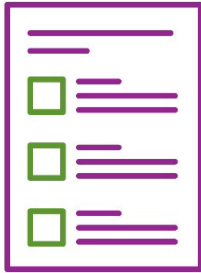


How to use this plan



We are City of Prospect.

We wrote this plan.



We wrote some words in **bold**.

We explain what these words mean.

There is also a list of these words on page [24](#).



You can ask someone you trust for support to:

- read this plan
- find more information.



This is an Easy Read summary of another plan.

It only includes the most important ideas.



You can find the other plan on our website.

<https://cityofprospect.engagementhub.com.au/>

What's in this plan?

What we want for City of Prospect	4
About our plan	5
How we made our plan	6
Our goals	8
Create accessible and inclusive transport	10
Support people with disability to be leaders	13
Provide disability training and share more accessible information	16
Use more universal design	18
Other ways we will support our plan	20
Word list	24
Contact us	27

What we want for City of Prospect



We want to make City of Prospect more **accessible**.



When the community is accessible, it is easy to:

- find and use things
- travel around.

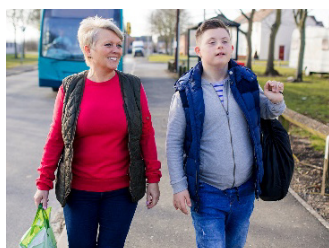


We also want to make City of Prospect more **inclusive**.



When the community is inclusive, everyone can:

- take part
- feel like they belong.



We want the community to be more accessible and inclusive for:

- people with disability
- families and carers.

About our plan



This is our draft Disability Access and Inclusion Plan 2026–2030.

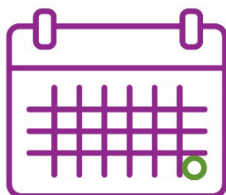
In this document, we just call it our plan.



Our plan explains how we will make City of Prospect more accessible and inclusive.



Our plan will replace our old Disability Access and Inclusion Plan 2021–2025.



We will use our new plan until 2030.

How we made our plan



We worked with our Access and Inclusion Community Advisory Group to make our plan.



An **advisory group** is a group of people who work with us to share what:

- is working well
- needs to work better.

Our Access and Inclusion Community Advisory Group includes:



- people with disability



- families and carers



- services and organisations that support people with disability.



We also worked with Purple Orange to make our plan.



Purple Orange is an organisation that works to make the community more inclusive for people with disability.

Our goals

Our Access and Inclusion Community Advisory Group said our plan should have 4 main goals:



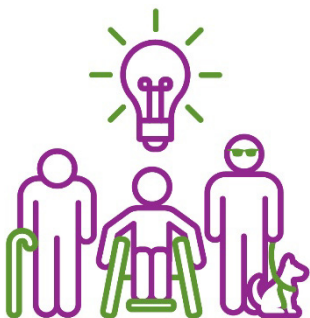
- Create accessible and inclusive transport



- Support people with disability to be leaders



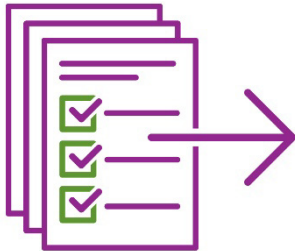
- Provide disability training and share more accessible information



- Use more **universal design**.



Universal design means we think about what everybody needs when we plan or start new projects and services.



We explain what we will do for each of these goals on the following pages.

Create accessible and inclusive transport

What we want



We want everyone to be able to travel around the community safely and easily.

What we will do

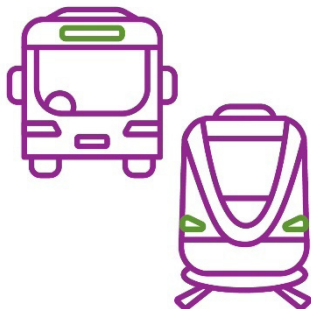
We will look for ways to improve:



- footpaths

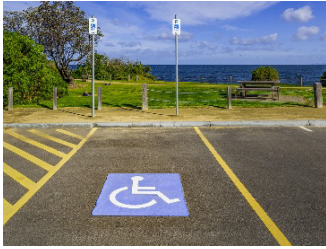


- bike lanes



- how easily people can use public transport.

We will also look for where we can add more:



- accessible parking

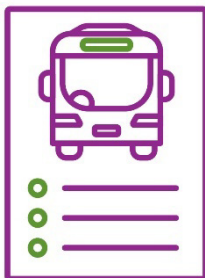


- signs



- ramps.

We will start using our Integrated Transport Plan.

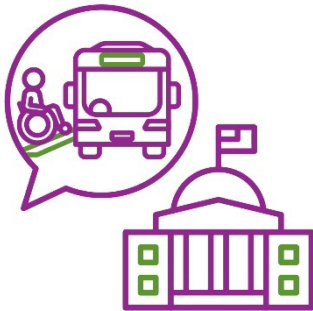


This is our plan to work with the Government of South Australia to make public transport in the community:

- more accessible
- better connected.



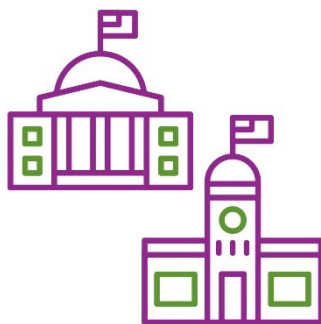
Our Integrated Transport Plan will help us make decisions about what we should work on first.



We will ask the Government of South Australia for more accessible public transport.



We will work with transport providers to make our public transport more accessible.



This includes transport providers from:

- the Government of South Australia
- other local governments.

Support people with disability to be leaders

What we want

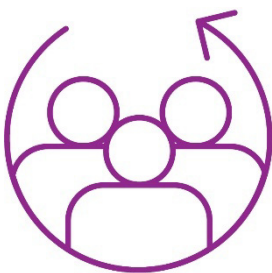


We want more people with disability to be leaders.



This includes leaders who work with:

- City of Prospect
- the community.



We also want more leaders in the community to be inclusive.



This includes people who:

- own a business
- lead community groups.

What we will do

We will look for ways to make sure people with disability can:



- help make decisions



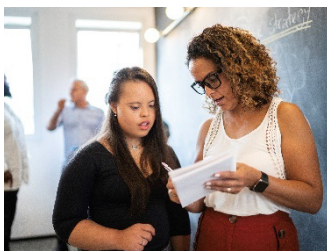
- share their ideas



- work with us on projects.



We will support programs that help people with disability to become leaders.



This might include **mentoring** programs.

Mentoring is when someone guides you to learn new things.



We will support programs that support people with disability to become leaders.



We will look into how we can celebrate people and businesses who are inclusive.

Provide disability training and share more accessible information

What we want

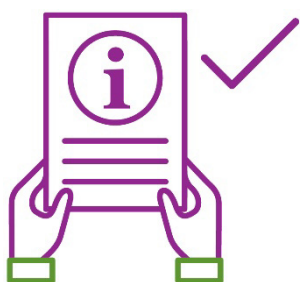


We want to improve community **attitudes** about people with disability.

Your attitude is what you think, feel and believe.



We want to help the community understand how to be inclusive.



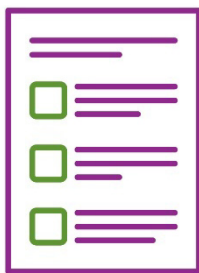
We want the information we share to be accessible and inclusive.

What we will do



We will share more accessible information in different ways.

For example, in:



- Easy Read



- large print.



We will make a checklist for our staff to use when they talk with the community.

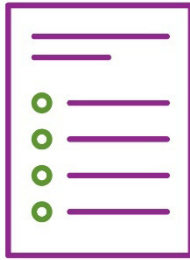


This checklist will help staff talk in an accessible way.

Use more universal design

What we want

We want to use more universal design for our:



- plans



- buildings



- public spaces.



We want everyone in the community to feel safe and welcome.

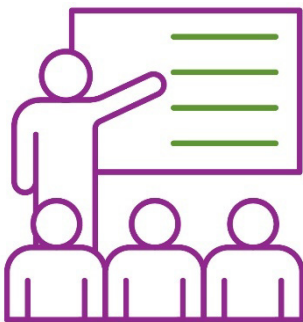
What we will do



We will use universal design when we plan new projects.



This includes how we can work with people from the community on our projects.



We will make sure our staff have training to understand universal design.



We will look for ways to make our buildings and open spaces more accessible.



We will also look for ways to make our new parks and playgrounds accessible.

Other ways we will support our plan

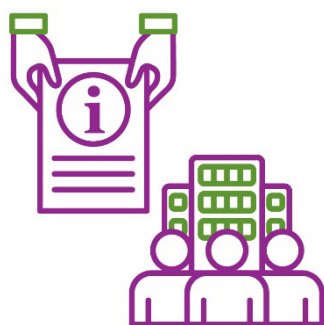


We have other actions in our plan that will make the community more accessible and inclusive.

We have included some of these on the following pages.



We will keep looking for ways to make our events more accessible and inclusive.



We will share information with businesses about how they can be more accessible and inclusive.



We want to provide more accessible public toilets and car parks.



We will offer different ways for people with disability to **volunteer**.

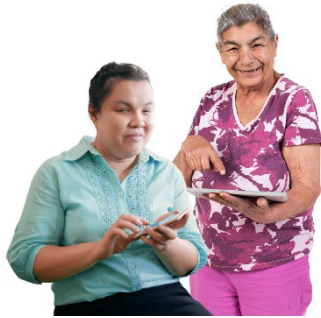


When you volunteer, you:

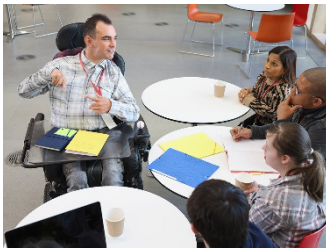
- work but you don't get paid
- do work that helps the community.



We will look for ways to hire more people with disability to work with us.



We will make sure our rules and guidelines are accessible.



We will train our staff and leaders about how they can make our workplaces accessible and inclusive.



We want to connect more people to accessible support organisations and services.



We will work to support the **rights** of people with disability.

Rights are rules about how people must treat you:

- fairly
- equally.



We will look at how to make sure the way we respond to an **emergency** is accessible and inclusive.



An emergency is a dangerous situation that no one expects to happen.

Word list

This list explains what the **bold** words in this plan mean.



Accessible

When the community is accessible, it is easy to:

- find and use things
- travel around.



Advisory group

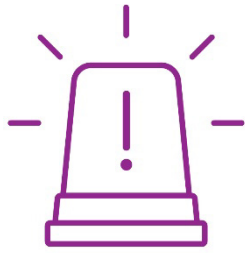
An advisory group is a group of people who work with us to share what:

- is working well
- needs to work better.



Attitude

Your attitude is what you think, feel and believe.



Emergency

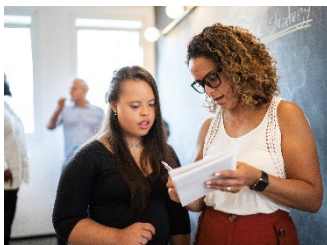
An emergency is a dangerous situation that no one expects to happen.



Inclusive

When the community is inclusive, everyone can:

- take part
- feel like they belong.



Mentoring

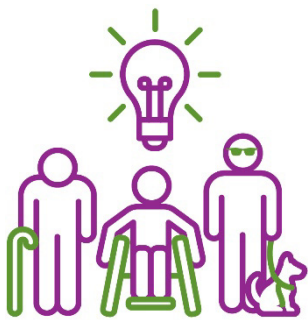
Mentoring is when someone guides you to learn new things.



Rights

Rights are rules about how people must treat you:

- fairly
- equally.



Universal design

Universal design means we think about what everybody needs when we plan or start new projects and services.



Volunteer

When you volunteer, you:

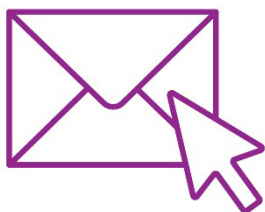
- work but you don't get paid
- do work that helps the community.

Contact us



You can call us.

(08) 8269 5355



You can send us an email.

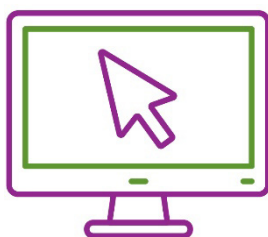
admin@prospect.sa.gov.au



You can write to us.

128 Prospect Road, Prospect

South Australia, 5082



You can visit our website.

www.prospect.sa.gov.au



The Information Access Group created this Easy Read document using stock photography and custom images. The images may not be reused without permission. For any enquiries about the images, please visit www.informationaccessgroup.com.
Quote job number 6527.