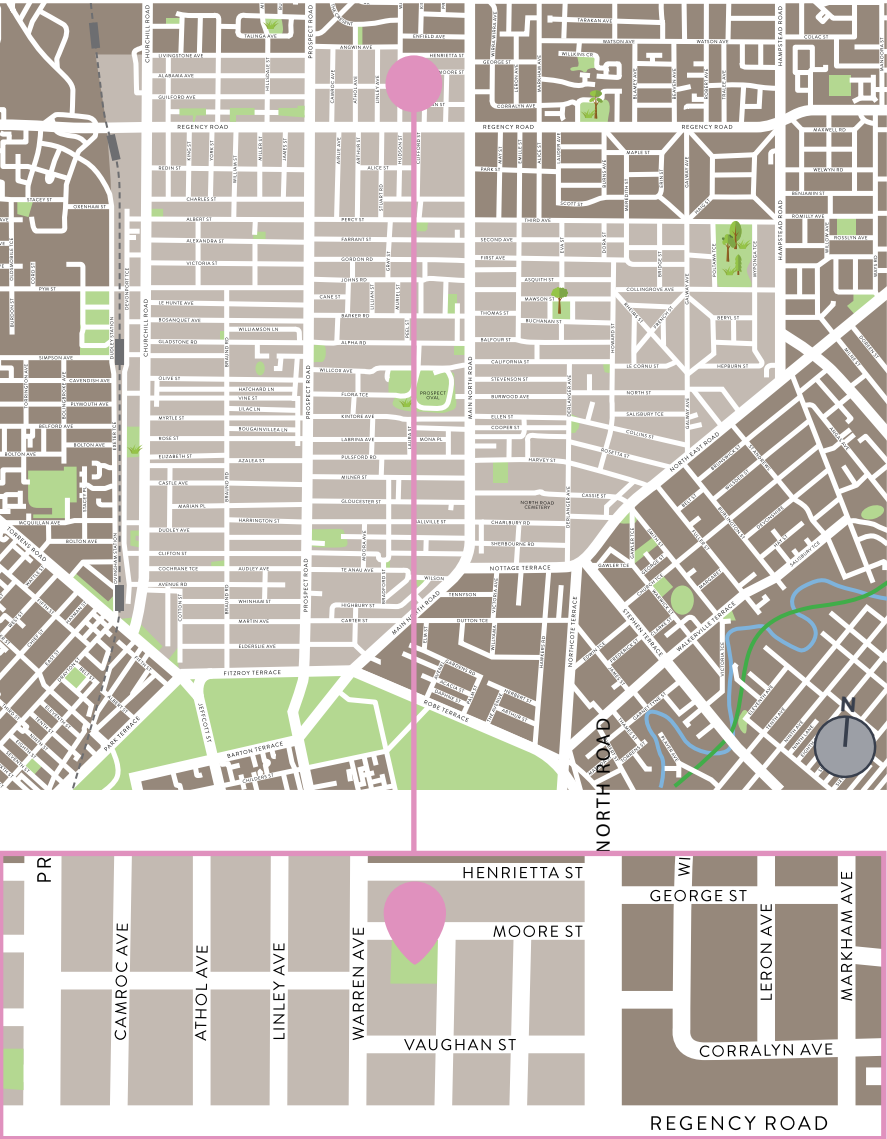


MATTHEWS RESERVE



CURRENT

Size:

3,500 sqm²

Location:

Corner Straun Avenue and Moore Street

Classification:

Minor Park / Playground area

Key Features:

- 3 x Club Tennis Courts
- Drink fountain
- Seating
- Shade Trees
- Irrigated Lawn

Clubs:

- Blair Athol Tennis Club
- Access to the tennis courts is restricted to set times and formal bookings with the club.

Playground:

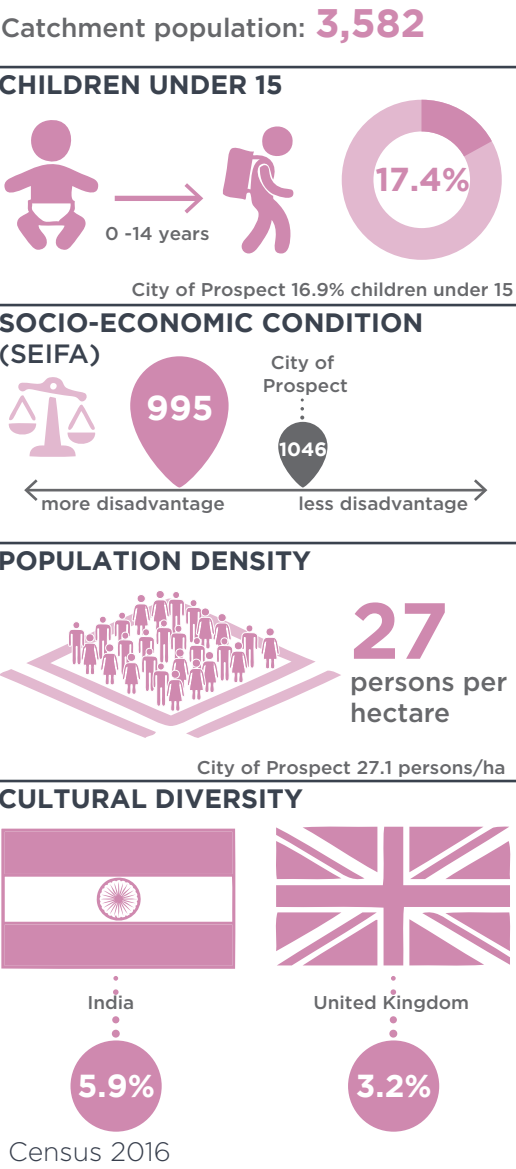
- Overall poor quality of playspace.
- 2 x Swing sets
- 2 x Springers
- 1 x See-saw
- 2 x Play Structure with slide
- 1 x climbing spinner
- No fence - playground located in back corner of reserve away from roads

Function:

- Community park with private club access accounting for the majority of the site.



MATTHEWS RESERVE



PROPOSAL

Proposed Classification:

Local Park

Recommendation:

- Redesign overall park to invite more public access and improved utilisation of space and consider consolidating facilities on the site and evaluating overall park design.
- Upgrade playspace area.
- Review park signage.

PARK / RESERVE	PARK TYPE	Short Term	Medium Term	Long Term
20 Matthews Reserve	Local Park			