

Irish Harp Reserve

Revised Concept

Prepared for City of Prospect by
JPE Design Studio

22040

22.02.2023
Revision A

01 | Revised Concept

JPE Design Studio Pty Ltd
Architecture
Interior Design
Landscape Architecture
Urban Design

Level 4, 19 Gilles Street
Adelaide SA 5000

Tel 08 8406 4000
Fax 08 8406 4007
design@jpe.com.au
www.jpe.com.au

ABN 97 007 776 249

Revision	Issue Date	Issued By
A	22.02.2023	AM

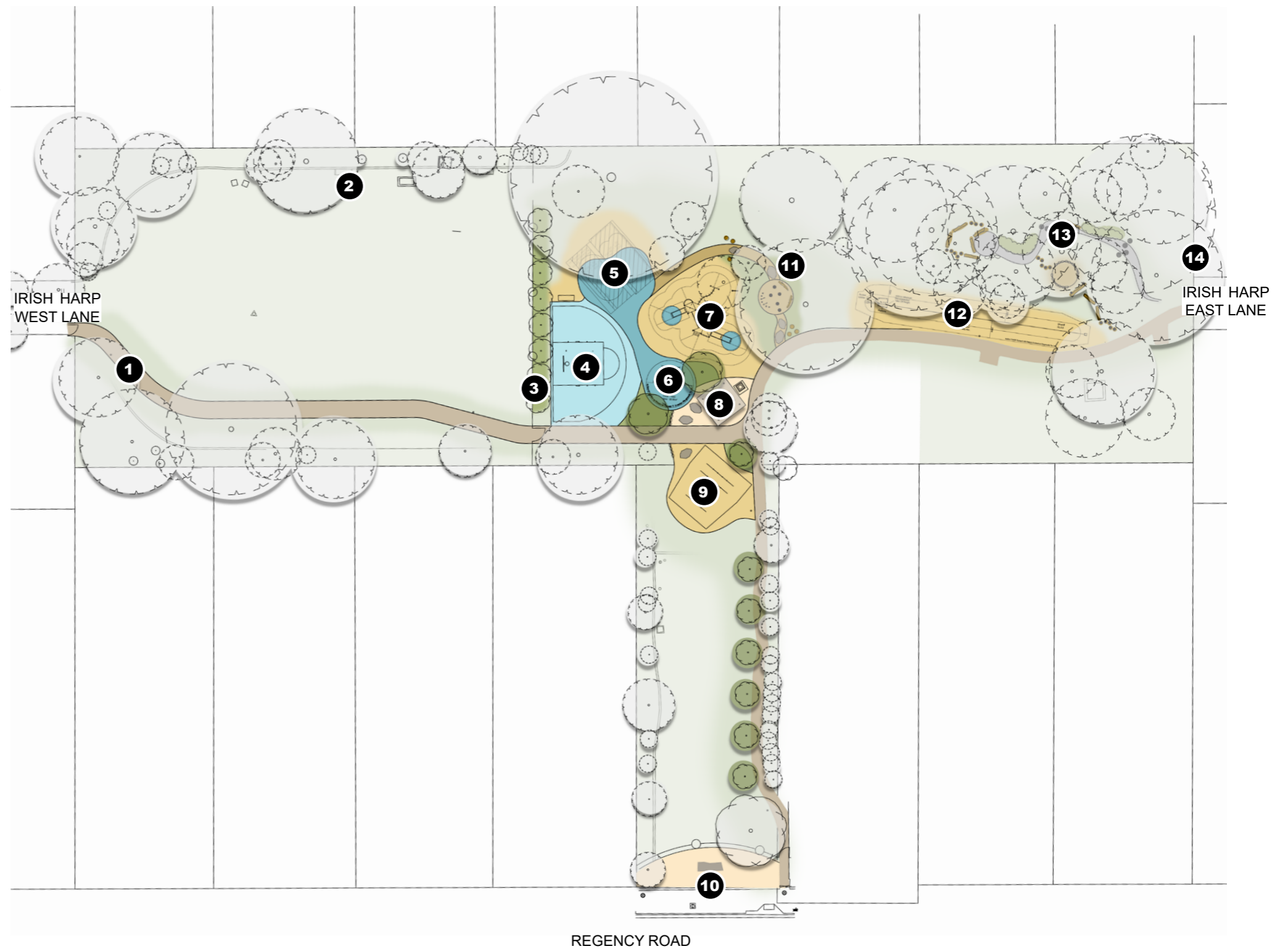


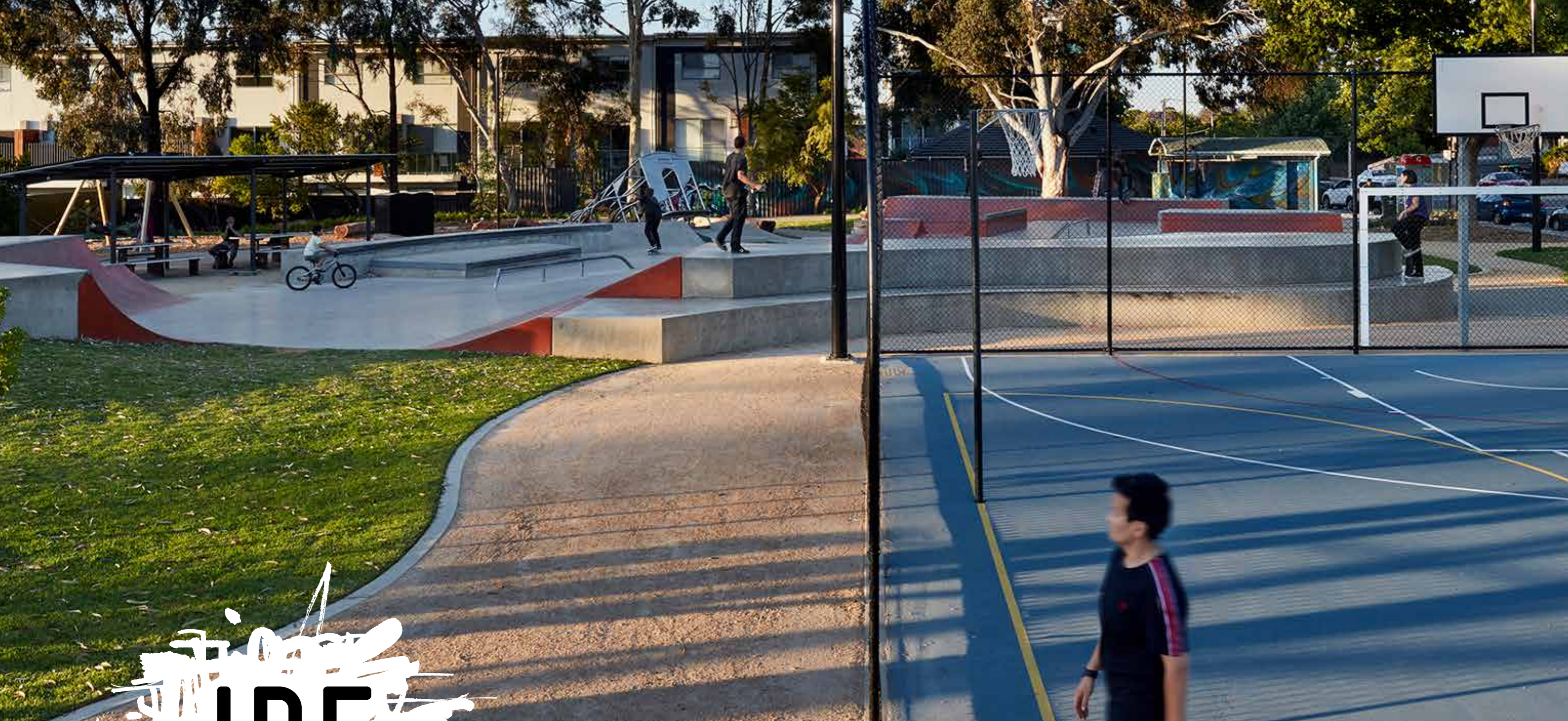
Revised Concept

The revised concept has made minor adjustments to the overall layout. Items have been repositioned to better accommodate existing tree protection zones (TPZ's) and improve the overall flow within the site.

The previous rope climb element has been substituted for an inclusive carousel and the music element has been incorporated into a sensory zone. The sensory zone will provide a quite area within the playspace. A loop connection has been added to provide inclusive access to a greater number of play items and areas.

- 1** New 2m wide path connecting Irish Harp Lane West to the new playspace
- 2** Dog agility equipment
- 3** New fence with 2 access gates, planting to the eastern fence edge
- 4** New basketball court
- 5** New swings, including basket swing
- 6** Inclusive carousel, in rubber soffit
- 7** New multiplay equipment piece, in organic soffit
- 8** Hardstand area with picnic setting, shelter and BBQ
- 9** Art/play aeroplane piece, in organic soffit
- 10** New defined entry
- 11** Sensory/quiet zone in playspace. Touch, smell, sight and noise sensory items
- 12** New cabelway in organic soffit
- 13** Swale with nature play elements
- 14** Clown art piece at entry to Irish Harp East Lane





JPE Design Studio

Architecture | Interior Design | Landscape Architecture | Urban Design

www.jpe.com.au

(08) 8406 4000

Level 4/19 Gilles Street,
Adelaide SA 5000